

2. Occlusal stamp for composite restorations

THE "LAZY WAY" TO DEAL WITH COMPLEX RESTORATION!



1. Use Regular Body to make transparent stamp



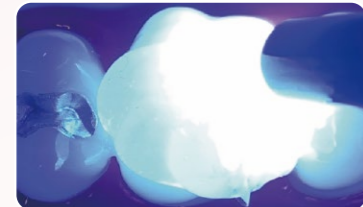
2. Prepare teeth, etch and apply adhesive



3. Fill with flowable resin or bulk resin



4. Press with the transparent stamp



5. Light cure the resin materials



6. Finish restoration after polishing

3. Indirect method of transferring orthodontic brackets

SAVE MORE THAN 50% OF CHAIRSIDE TREATMENT TIME!



1. Bond the brackets to the plaster model temporarily



2. Apply regular body to make transparent guide



3. Remove temporary adhesive from brackets



4. Prepare teeth, etch and apply adhesive



5. Apply the transparent matrix. Light cure the adhesive



6. Complete one-time transfer brackets

PACKAGE



PERFIT Regular Body

1. Standard Package	50ml×2 cartridges
2. Kit Package	50ml×2 cartridges+Mixer×6

YOUR PARTNERS IN COMPLEX CLINICAL SITUATIONS

Traditional impression technique

With PERFIT Light Body



- A silicone for two-step impression technique
- Visualization of transfer abutment in implant impressions
- High-precision impression results
- Good linear dimensional stability

With P-Etchant



- Phosphoric Acid Etching Gel
- Good rheology character, locate accurately.
- Bright colors to identify.
- Eliminates surface dirt and makes it rough for ease of bonding

With HugeBond Universal



- Light Cure Dental Adhesive
- Strong bonding strength no lower than 20MPa.
- Low film thickness.
- Virtually no postoperative sensitivity.

With TrusFIL-Flow



- Flowable Composite Restorative
- Easy to use
- Excellent rheological property
- Outstanding flexural strength and thixotropic character



Shandong Huge Dental Material Corporation

Add / No.68 Shanhai Road, Donggang District, Rizhao City, Shandong Province, 276800, P.R. China.

Tel / +86 (633) 2277268 marketing@hugedental.com www.hugedental.com

Facebook Huge Dental

Instagram Huge Dental

Youtube Huge Dental

PERFIT Regular Body-Transparent

The experts for traditional impression and special indications.

PERFIT Regular Body-Transparent is an additional silicone with medium viscosity. It uses direct and indirect techniques to address multiple defects. You can work with either:

Recommended Indications:

For Clinical Application:

» two-step impression technique with Light Body

» Indirect light-curing guide for

a. Mock up restoration

b. Bonding of orthodontic brackets

c. Occlusal stamp for composite restorations

For Lab Application:

» Composite injection moulding technique

Your Partner in Prosthetic Dentistry

HUGE



PERFIT Regular Body Transparent A-Silicone

PERFIT Regular Body-Transparent

is an A-silicone with medium viscosity. It is specifically designed to create a transparent matrix for aesthetic reconstruction in light-cured composites. It uses direct and indirect techniques to address multiple defects. Therefore, it has excellent aesthetic results in clinical and laboratory applications.



TECHNICAL PARAMETER

Technical Parameters	PERFIT Regular Body
Working Time	1min30s
Setting Time	3min00s
Shore A Hardness	62
Recovery from deformation	>99.5%
Linear dimensional change	<0.2%
Color	Transparent

*The times mentioned must be intended from the start of mixing at 23°C/73°F. Higher temperatures shorten the time, lower temperatures lengthen the time.

PERFIT

ADVANTAGES

Compared with other competing products, PERFIT Regular Body **rarely produces air bubbles** and is smooth to use. **High transparency** and **ideal rigidity** result in excellent aesthetic restorations. Versatile applications become its biggest advantage. Especially in terms of auxiliary functions, it can save at least **50% of the sideline work time** for clinicians or technicians.



Extreme Transparency



No bubbles



Ideal Rigidity



High Aesthetic Results

COMPARISON

PERFIT Regular Body in comparison to competitors:

From the comparison, it can be clearly seen that HUGE Regular Body has better transparency. And it rarely produces air bubbles and has a high aesthetic effect.



HUGE

Brand A

Brand B

Brand C

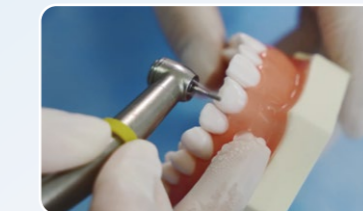
PERFIT Regular Body is colorless and transparent. This light-transmitting feature can well meet the needs of light curing.

With temporary crown and bridge materials, it can be used for temporary restoration. In the aesthetic restoration of anterior teeth, it can help to restore dental defects, such as resin veneers.

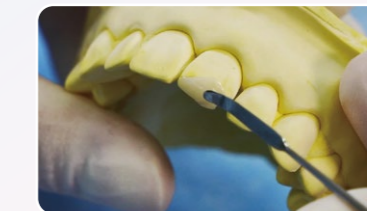
Clinical Application

The matrix created with PERFIT Regular Body achieves excellent aesthetics. In a short period of time, it can simplify clinical procedures and increase operational efficiency.

1. Indirect MOCK-UP Technology for aesthetic restoration



1. Prepare teeth and make the plaster model



2. Finish restoration with wax on plaster model



3. Apply Regular Body to the plaster model



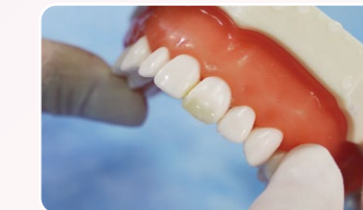
4. Use Regular Body to make transparent matrix



5. Fill the space with light-curing resins



6. Light cure the resin materials



7. Finish restoration after polishing

MOCK UP CASES

- Aesthetic restoration of anterior teeth
- Multiple depression restoration of posterior teeth
- Full occlusal reconstruction
- Multiple dental caries in children

ADVANTAGES

- Operational visualization
- Excellent light transmission
- Less microleakage

